

ET4500

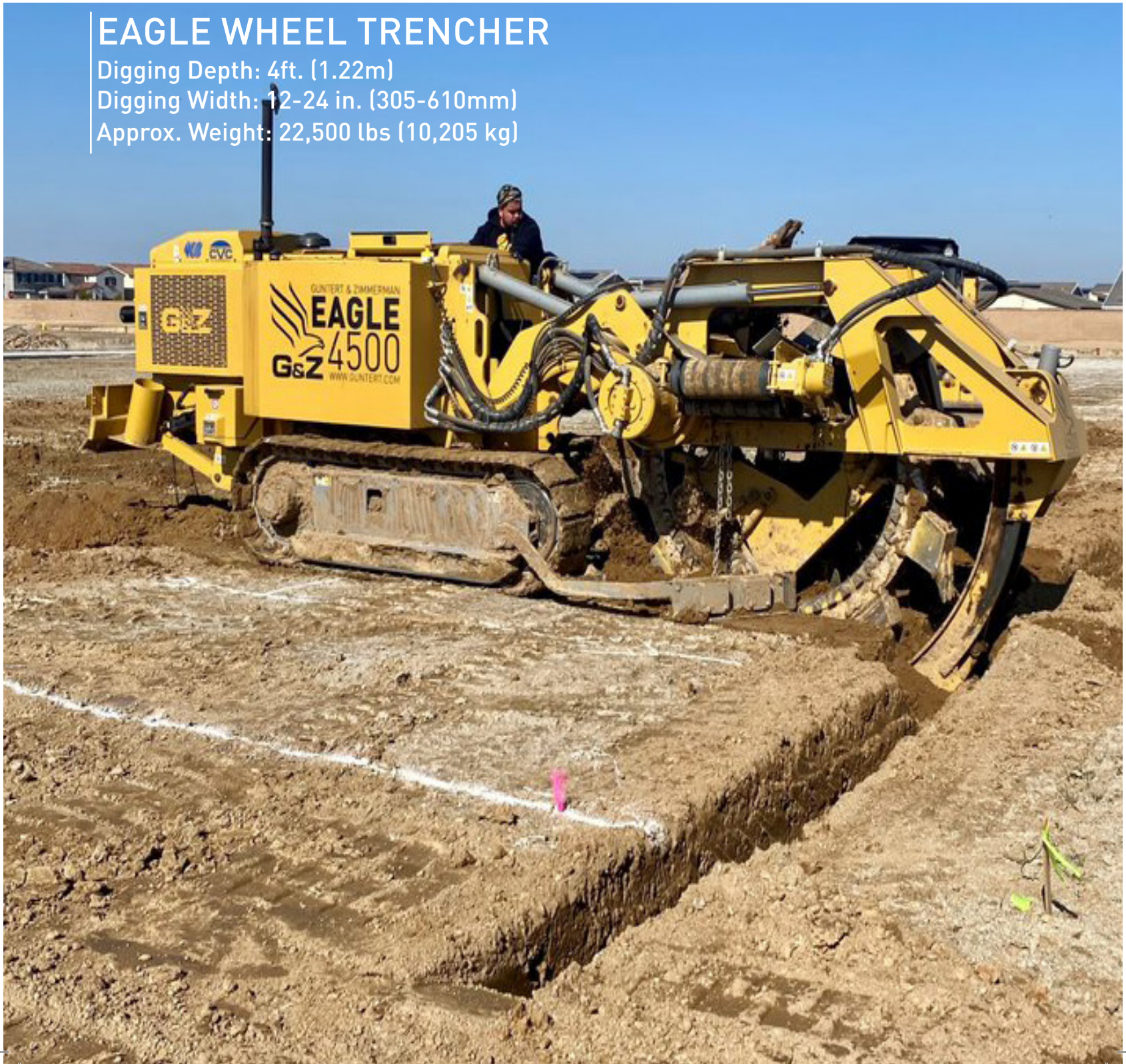


EAGLE WHEEL TRENCHER

Digging Depth: 4ft. (1.22m)

Digging Width: 12-24 in. (305-610mm)

Approx. Weight: 22,500 lbs (10,205 kg)



HIGH PRODUCTIVITY / LOW OPERATING COST

BOOM FRAME

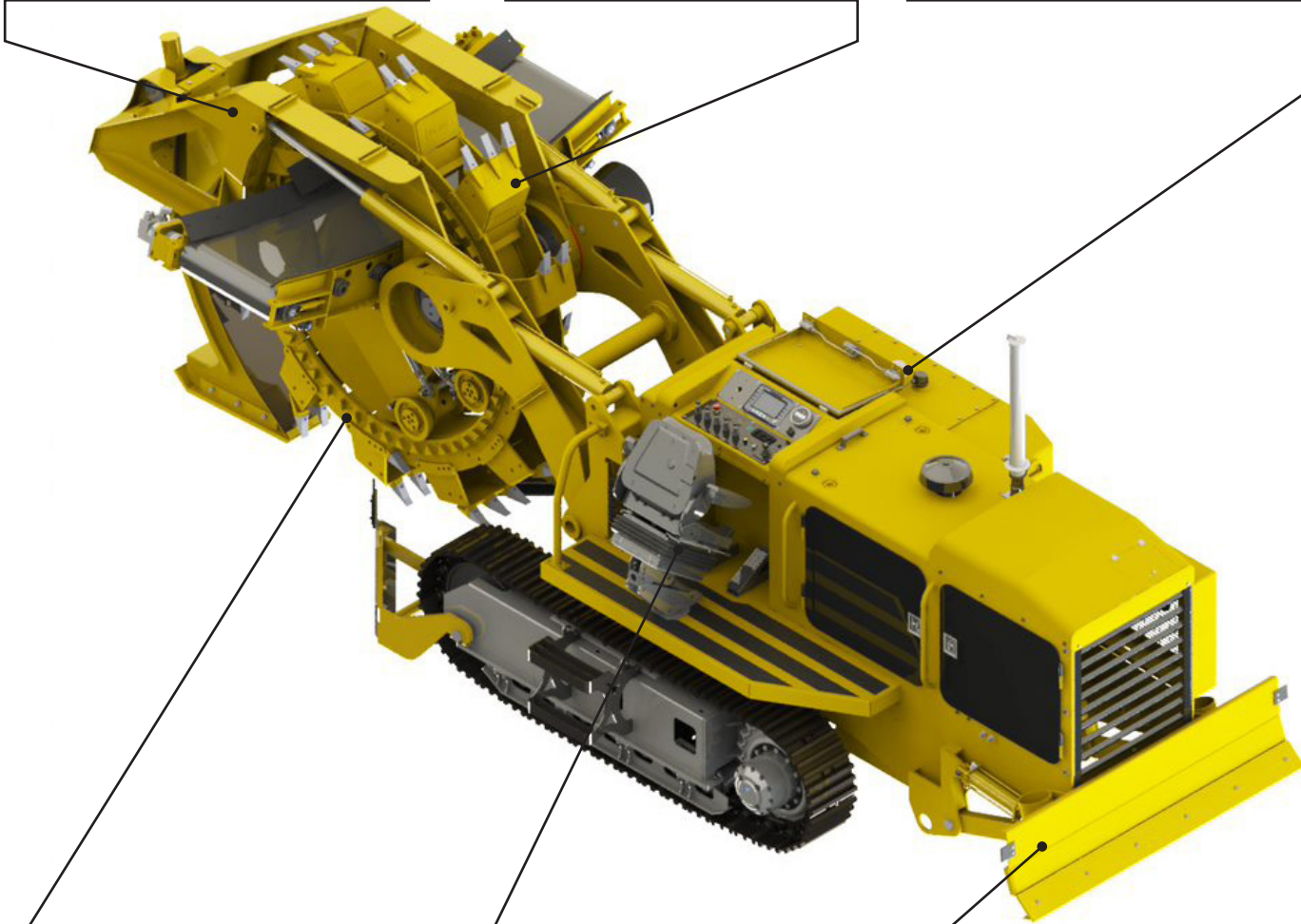
Heavy-duty bridge type boom frame and swing arm assemblies with hydraulic wheel lift and tilt cylinders ensure many years of dependable use.

BUCKETS

The digging wheel is equipped with standard nom. 11 in. (280mm) formed buckets and optional 8.25 in. (216mm) narrow wheel buckets.

OPERATOR CONTROLS

Intuitive operator control console includes engine display, touch screen type operator interface and wireless control box for remote operation and loading/unloading of a trencher.



DIGGING WHEEL

Robust low speed / high torque motor is mounted directly to wheel drive #1 shaft. Optimized split sprockets and segments are designed for better power transmission and reduced wear.

OPERATOR STATION

The adjustable operator seat that folds in for transport and electronic foot pedals maximize operator productivity and ensure smooth operation and control.

DOZER BLADE

The trencher is equipped with two way dozer blade with stake pockets and replaceable cutting edge, powerful enough to push or drag piles of dirt where needed.



OPERATOR CONSOLE DETAILS

- Operator Control Console is equipped with protective and lockable cover, complete with intuitively organized push buttons, switches and joy sticks.
- All machine control functions are electric over hydraulic and go through G&Z's EGON microcontroller system. This G&Z proprietary software complete with fault, self-diagnostic capability allows G&Z service technicians to troubleshoot quickly and update software.
- CAN interface through high resolution, anti-glare color LCD touch screen with USB interface.

LOW EMISSIONS ENGINE

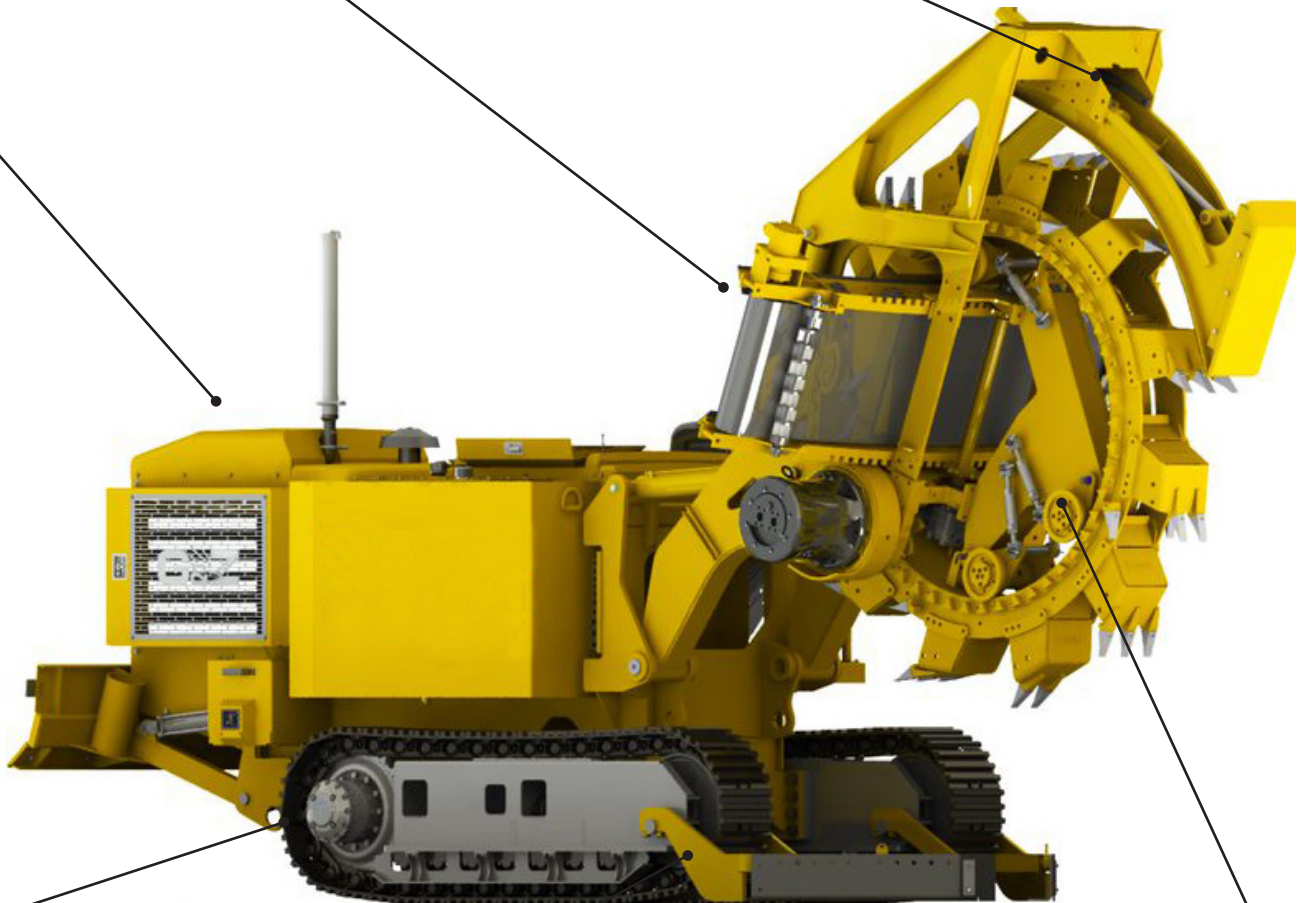
4-cylinder CAT C3.6 low emissions diesel engine 134 hp (100 kW) US EPA Tier 4f / EU Stage V, is a perfect balance of compact size, reliability, and performance backed by world class CAT service and support.

CONVEYOR

Hydraulic motor driven discharge conveyor with a 24 in. (610mm) wide V-guided belt, hydraulically shifts left to right. Grease gun type take-up pulleys and skirting keep maintenance to low.

CRUMB SHOE

Hydraulic roll-up crumb shoe with a servicable, bolt-on Hardox wear plate on the bottom of the shoe helps you dig to depth quicker and keeps freshly dug trench cleaner.



CRAWLER TRACKS

The crawler tracks are equipped with planetary gear boxes and bent axis hydraulic motors, rock guards, and spring-loaded, grease gun type front idler assemblies.

BERM SCRAPERS (OPTIONAL)

Berm scrapers drag any loose dirt on the sides of the trench back into a trench for removal by buckets.

WHEEL TRUCKS

Three heavy-duty, low maintenance and adjustable wheel trucks provide optimum contact between wheel rims and wheel trucks.



EGON OPERATOR CONTROL SYSTEM

G&Z EGON Control System provides contractors the latest in modern machine control, diagnostics, and elevation and steering controls while increasing the trencher operational productivity:

- Reduced diagnostics time and improved serviceability
- Accurate fuel consumption data for cost analysis
- Prevention of potential failures / issues

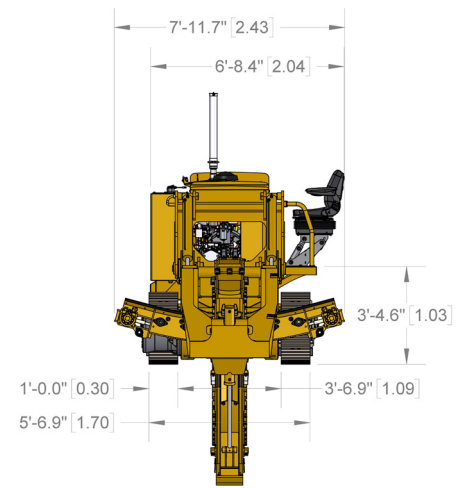
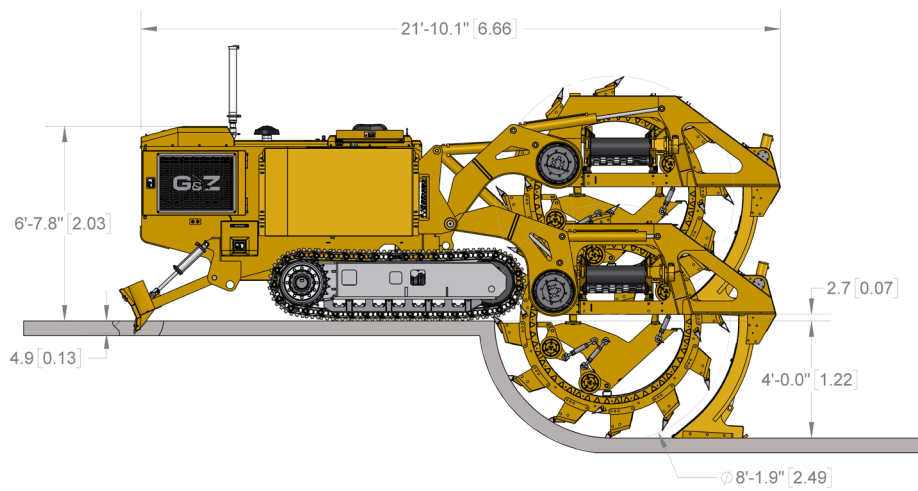
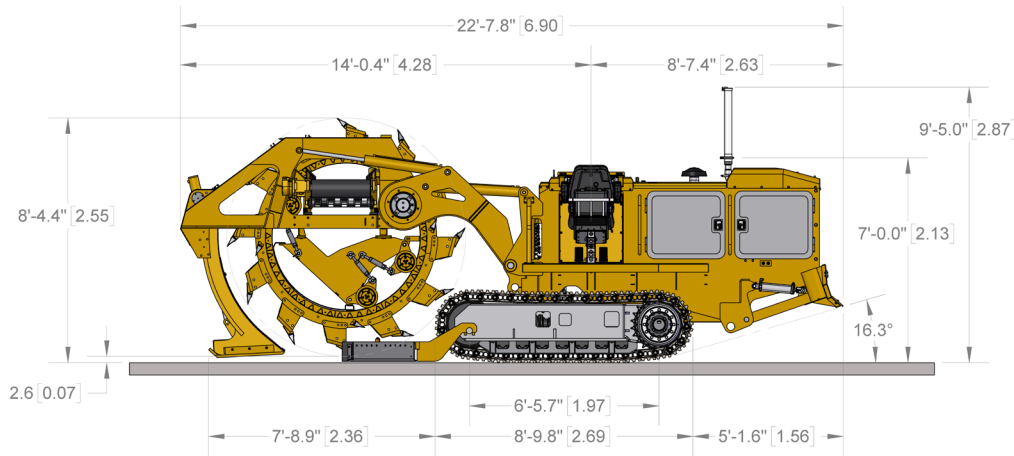
Topcon, Leica, and Trimble GPS Guidance Systems allow the trencher to dig for miles without the need for regular surveying and worrying about alignment or high or low spots somewhere along the length of the trench.

ET4500 SPECIFICATIONS

APPLICATIONS	Residential and Commercial Foundations Utilities Irrigation
MAXIMUM DIGGING WIDTH	12 -24 in. (305- 610mm) <i>Note: Trenches wider than nom. 12 in. (305mm) require bolt-on side cutters</i>
MAXIMUM DIGGING DEPTH	4 ft. (1.22m) <i>Note: Maximum depth reduced by 7 in. (177mm) when berm scrapers are required</i>
OPERATING WEIGHT	22,500 lbs (10,205 kg)
ENGINE / FUEL TANK	4 Cylinder CAT C3.6 Diesel Engine US EPA Tier 4f / EU Stage V, Intermittent Horsepower @ 2,100 RPM: 134hp (100kW) Diesel Fuel Tank 55 U.S. Gallon (208L) DEF Tank 5 U.S.Gallon (19L) for 12 hr operation – 4 Cylinder CAT C3.4B Diesel Engine US EPA Tier 3 / EU Stage IIIA, Intermittent Horsepower @ 2,100 RPM: 115hp (86kW) Diesel Fuel Tank 50 U.S. Gallon (189L)
WHEEL DRIVE	High torque / low speed hydraulic motor mounted directly to wheel drive #1 shaft with bolt-on, cast and heat treated split sprockets to drive wheel rim segments
TEETH	Hensley X156 Forged Teeth
WHEEL RIMS	5/8" (16mm) Hardox steel rims with cast and heat treated weld-on rim segments
BUCKETS	12ea. nom. 11 in. (280mm) standard formed buckets for cutting 12 in. (305mm) wide <i>Note: See pg 5. for standard and optional narrow wheel trench cross sections</i>
CONVEYOR	Direct hydraulic motor driven discharge conveyor, reversible, with 24 in. (610mm) wide V-guided belt, belt skirting and hydraulic motor driven conveyor shift. Approx. working speed 0-1000 fpm (0-305 mpm).
CRAWLER TRACKS	Standard 12 in. (305mm) wide and 77.5 in. (1969mm) center to center triple grousers with high reduction planetary gear boxes, driven by bent axis motors, rock guards and spring-loaded grease gun type front idler assemblies. Approx. working speed 0-170 fpm (0-50 mpm).
STANDARD FEATURES	<ul style="list-style-type: none"> Hydraulically roll-up crumb shoe with bolt-on Hardox wear plate Lockable external battery box Air ride and adjustable operator seat G&Z EGON Telematics capability with purchase of annual subscription Back-up alarm Walkbox for remote operation
OPTIONAL FEATURES	<ul style="list-style-type: none"> Narrow wheel Utility / Irrigation buckets Cable laying attachment Carbide teeth Stringline / GPS / 3D Laser Guidance Software (Topcon, Leica or Trimble) for steering and grade control Heavy-duty berm scrapers for foundation work 15-24 in. (381-610mm) Side Cutter Sets Auto Lube system with grease lines Custom paint Umbrella

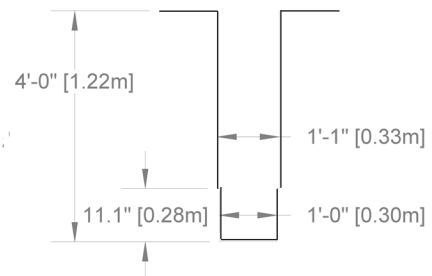
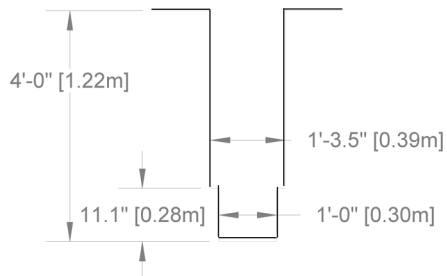
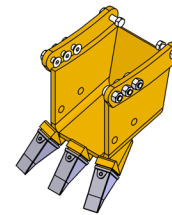
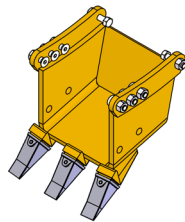
Note: All the above dimensions and capacities are approximate and are subject to change without notice

ET4500 DIMENSIONS



**Standard 11 in. (280mm)
Formed Bucket**

**Narrow 8-1/2 in. (216mm)
Wheel Bucket (optional)**



Note: All the above dimensions are approximate and are subject to change without notice

Guntert & Zimmerman Const. Div., Inc.

222 E. Fourth St. Ripon, CA 95366 U.S.A.
Phone +1 209-599-0066 Fax +1 209-599-2021
Toll Free 800-733-2912 (USA / Canada)
Email: gz@guntert.com Web: www.guntert.com



G&Z reserves the right to make improvements in design, material and/or changes in specifications at any time without notice and without incurring any obligation related to such changes.

Brochure No. 400P218

